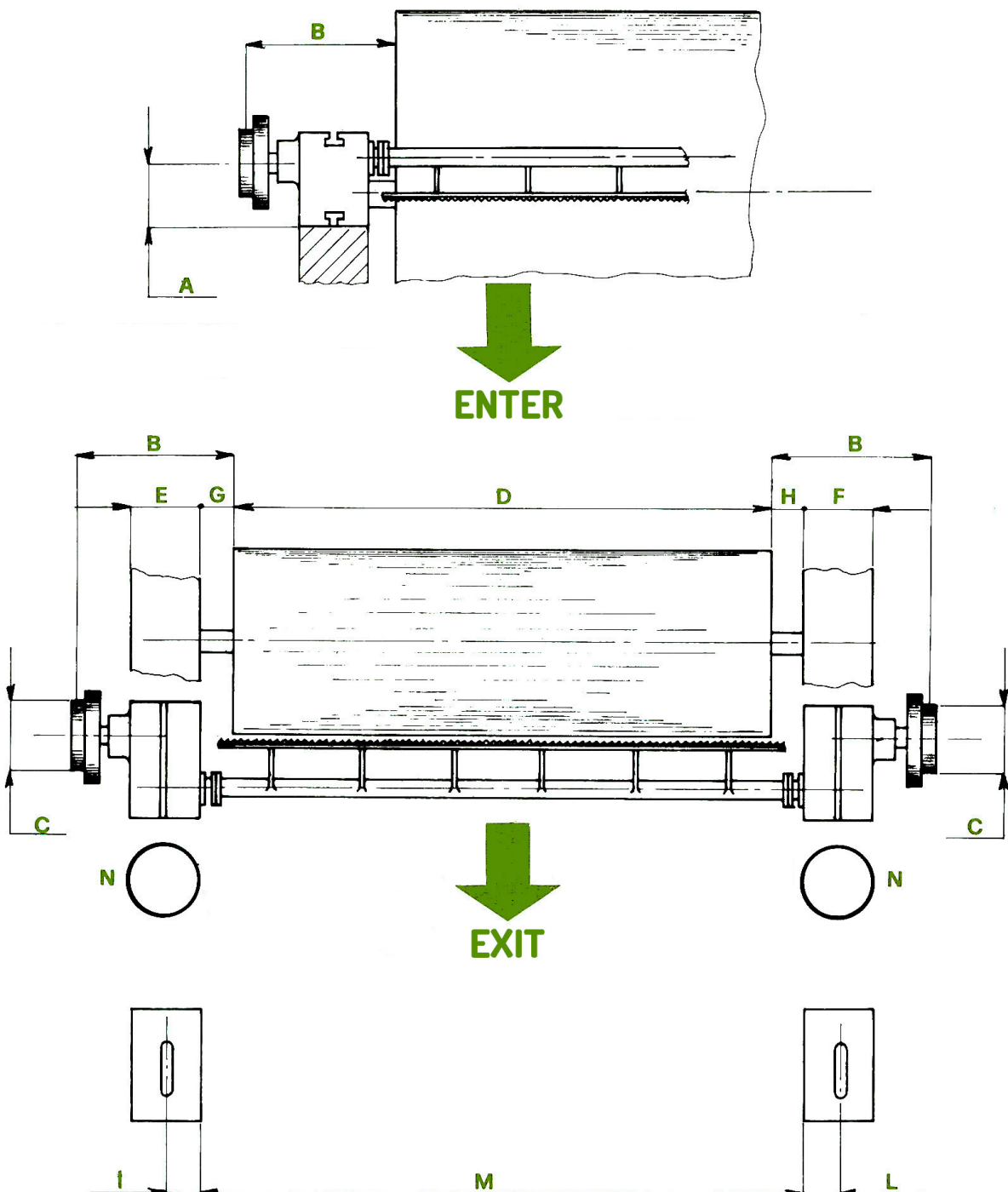


SCHEME FOR THE SURVEY OF THE MEASURES FOR THE FLY COMB





	mm
A Height from the base of the motion - box to the middle of the comb - shaft.	
B Space between the internal comber roller and the centre line of the belt.	
C Inside diameter of the pulley.	
D Working width of the comber roller.	
E Breadth of the base to fix the comb to.	
F Breadth of the base to fix the comb to.	
G Internal distance between the base of support for the comb and the comber roller	
H Internal distance between the base of support for the comb and the comber roller	
I Position of the holes for the fixing of fly comb on sits base	
L Position of the holes for the fixing of fly comb on sits base	
M Inside distance between the supporting bases of the fly comb	
N Please mark with a cross in the SPECIAL LITTLE CIRCLE in what side is the motion box.	
P If the pillars of comb for blade must be CURVED <input type="checkbox"/> or STRAIGHT <input type="checkbox"/>	

PLEASE LET US KNOW FURTHERMORE:

1 The name of the constructor of the Carding- machine:	
2 Year of production:	
3 If the machine is: <input type="checkbox"/> BREAKING - <input type="checkbox"/> TRAVERSE - <input type="checkbox"/> CONTINUOUS	
4 Number of the teeth of the blade every 25 mm.:	
5 If the OUT - END SUPPORT OPPOSITE to the motion box must be made with BEARING <input type="checkbox"/> or with PLANE BRONZE BUSHING: <input type="checkbox"/>	